

Movement by Perfection



The Royal League in **ventilation**, control and drive technology



Product documentation

Type
FN080-ZIQ.GL.V7P3

Article number
154946

Product documentation

Customer

ZIEHL-ABEGG Contact

Project

ZIEHL-ABEGG Subsidiary
China
ZIEHL-ABEGG Mechanical
and Electrical Equipment (Shanghai)
Co. Ltd.
No. 65 Hong Mu Dan Road
Xinbang Town
Songjiang District
SHANGHAI 201605
CHINA
Phone +86 21 57893991
Fax +86 21 57893932
www.ziehl-abegg.cn
info@ziehl-abegg.com.cn

Type
FN080-ZIQ.GL.V7P3

Article number
154946



Contents

1.	Product specification	3
2.	Characteristic Curve	4
3.	Drawing	5
4.	Connection diagram	6
5.	EU-Declaration of conformity	7

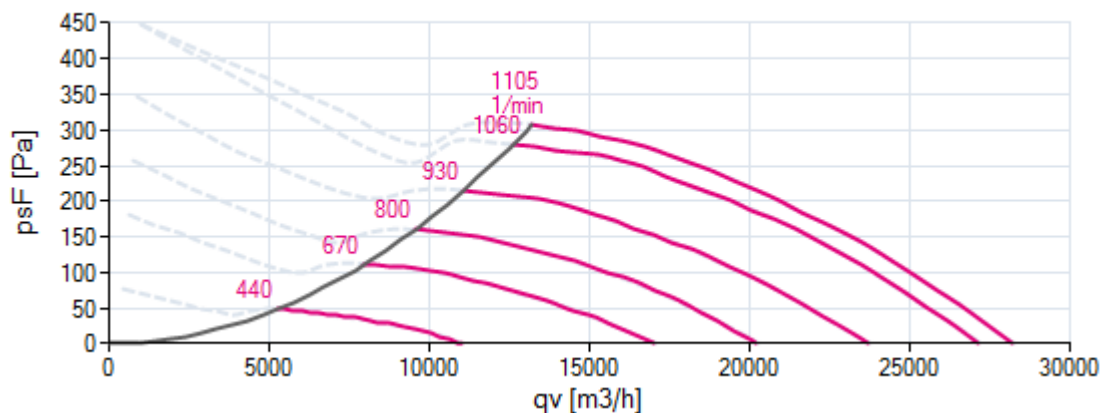
1. Product specification

Technical data

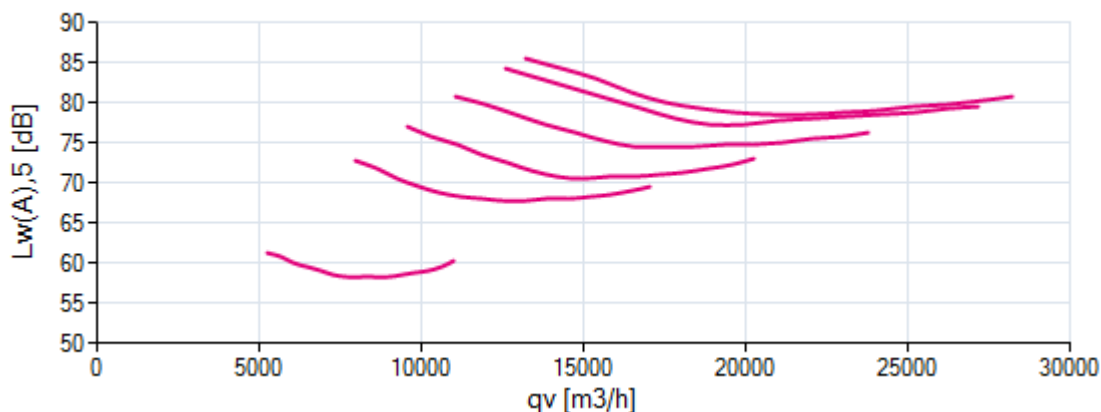
Article number	154946
Type	FN080-ZIQ.GL.V7P3
Designation	Axial fan with sickle blades
Rated values	3~380-480V 50/60Hz P ₁ 3,10kW 4.80-3.80A 1100 min ⁻¹ 55 °C
Electrical connection	Integrated controller
Min. operating temperature °C	-35
Type of protection	IP54
Thermal class	THCL155
Connection diagram	1360-403
Rating plate	1x fixed
Fitting position	H/Vu/Vo
Motor protection	integrated active temperature management
Impregnation	Moisture and hot climate protection
Quality of bearings	ball bearing with long-time lubrication
Material Rotor	Aluminium
Painting rotor	Rotor 1 coat painted
colour rotor	RAL 5002 (ultramarine blue)
Material blades	Aluminium
Painting impeller	unpainted
Certification	UL Listed Product
Guard grille type	ring grill
Painting housing	Bell mouth powder-coated consistency class 2
Colour housing	RAL 9005 (jet black)
Painting mot.suspens	Motor suspension powder-coated consistency class 2
colour suspension	RAL 9005 (jet black)
Weight kg	51,40
ErP Data	Efficiency η_{statA} : 46,4 % Efficiency: $N_{actual} = 49,9 / N_{target} = 40^*$ *ErP 2015

2. Characteristic Curve

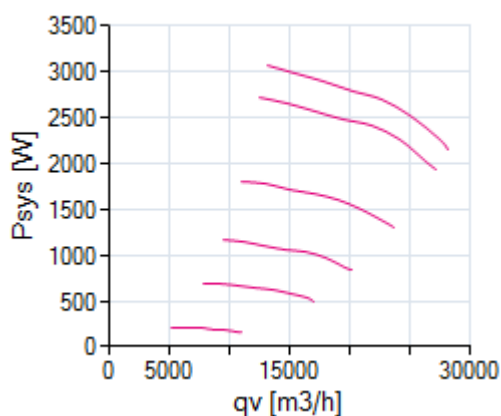
Air performance



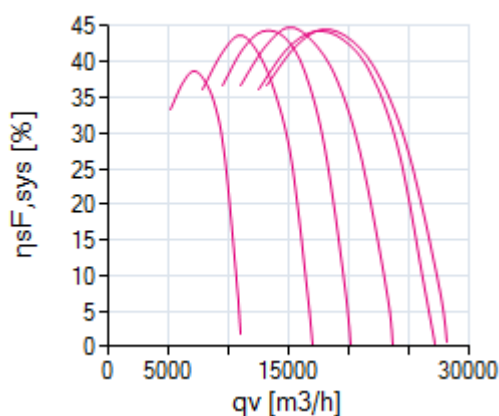
Acoustics



Power input



Efficiency

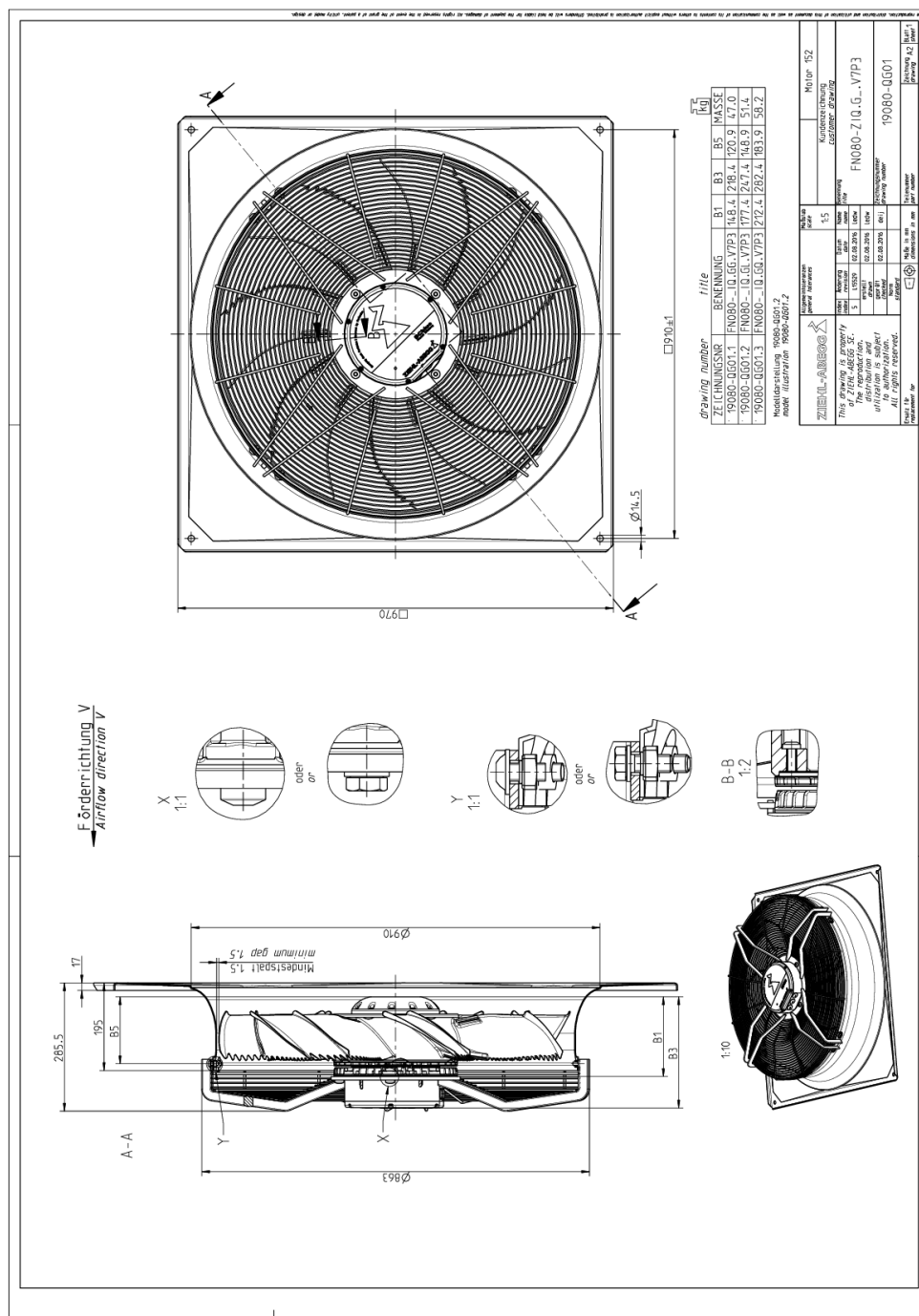


measured in full bell mouth without guard grille in installation type A according to ISO 5801

Please note: It's not allowed to use this fan in the stall area!*

*In doubt please ask your responsible ZIEHL-ABEGG sales contact.

3. Drawing

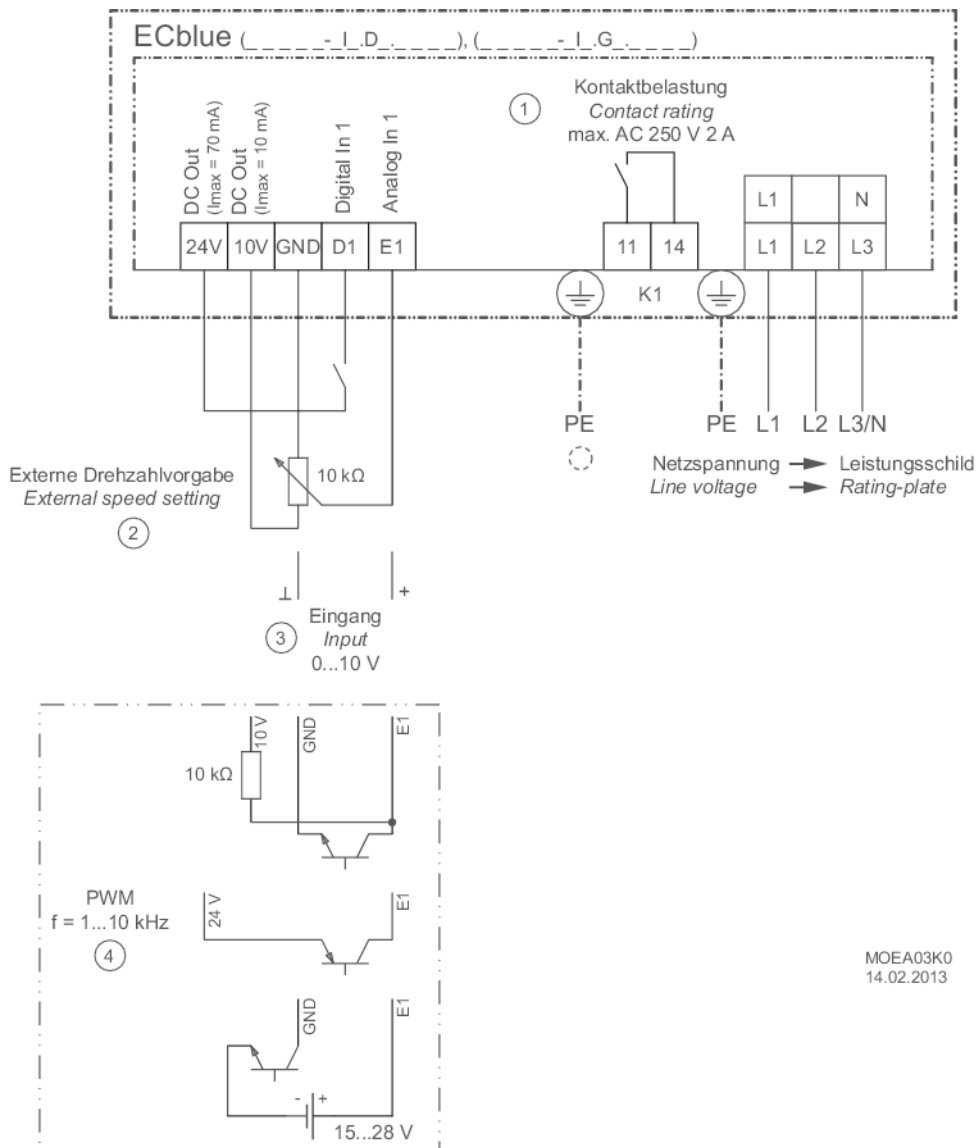


Dimensions in mm

Shown drawing is just to show the dimensions of the fan.

4. Connection diagram

1360-403



5. EU-Declaration of conformity

EC-Declaration of conformity

- Translation -
(english)

ZA75-GB 1616 Index 011
00285644-GB

Manufacturer: ZIEHL-ABEGG SE
Heinz-Ziehl-Straße
74653 Künzelsau
Germany

The manufacturer is solely responsible for issuance of the declaration of conformity.

The products:

- External rotor motor MK..., MW..
- Axial fan FA..., FB..., FC..., FE..., FF..., FS..., FT..., FH..., FL..., FN..., FV..., DN..., VR..., VN..., ZC..., ZF..., ZN..
- Centrifugal fan RA..., RD..., RE..., RF..., RG..., RH..., RK..., RM..., RR..., RZ..., GR..., ER..
- Cross-flow fan QK..., QR..., QT..., QG..

The engine type:

- Asynchronous internal or external rotor motor
- Asynchronous internal or external rotor motor with integrated frequency inverter, except EDP system
- Electronically commutated (EC) internal or external rotor motor
- Electronically commutated internal or external rotor motor with integrated EC Controller, except EDP system

These products comply with the following EU directives:

- EMC Directive 2014/30/EU
- Low voltage directive 2014/35/EU
- ErP Directive 2009/125/EC, in conjunction with Regulation (EU) no. 327/2011

The following harmonized standards are in use:

EN 60034-1:2010 + Cor.:2010
EN 60204-1:2006 + A1:2009 + AC:2010
EN 60529:1991 + A1:2000 + A2:2013
EN 61000-6-3:2007 + A1:2011 + AC:2012
EN 61000-6-2:2005 + AC:2005

Compliance with the ErP Directive 2009/125/EC does not refer to external rotor motors MK..., MW..

All ErP-relevant information comprises measurements which are determined using a standardised measurement set-up. More details can be obtained from the manufacturer.

Compliance with the EMC Directive 2014/30 / EU refers only to those products when they are connected by mounting / operating instructions . If these products are integrated into a system or supplemented with other components (eg. sensing controls) and operated , the manufacturer or operator is responsible of the overall system for compliance with the EMC Directive 2014/30 / EU .

Künzelsau, 20.04.2016
(Location, date of issue)

ZIEHL-ABEGG SE
Dr. W. Angelis
Technical Director Air Movement Division
(Name, Function)



(Signature)

ZIEHL-ABEGG 

The Royal League Die Königsklasse



The Royal League in ventilation, **control** and drive technology

Intelligent control technology for any application

ZIEHL-ABEGG system capabilities:
Everything from a single source – perfectly matched for optimal performance

Please contact us. We would be pleased to design an individual solution for your requirements.

We would like to welcome you on our worldwide exhibitions. Please find our next exhibitions [here](#).